

AppSense DesktopNow Management Pack for Microsoft® Systems Center Operations Manager

Quick Install Guide

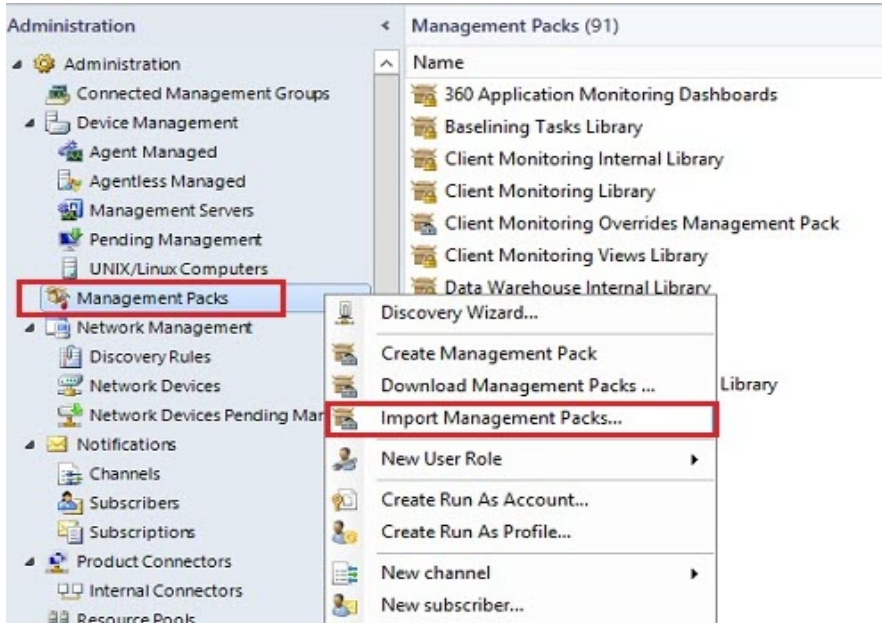
Management packs for System Center Operations Manager (SCOM) have been created for the following AppSense products:

- AppSense Application Manager Agent 10.0.298.0 or above
- AppSense Environment Manager Agent 10.0.525.0 or above
- AppSense Personalization Server 10.0.525.0 or above
- AppSense Performance Manager Agent 10.0.519.0 or above
- AppSense Deployment Agent 10.0.680.0 or above
- AppSense Management Server 10.0.680.0 or above

This guide details the steps required to install these management packs.

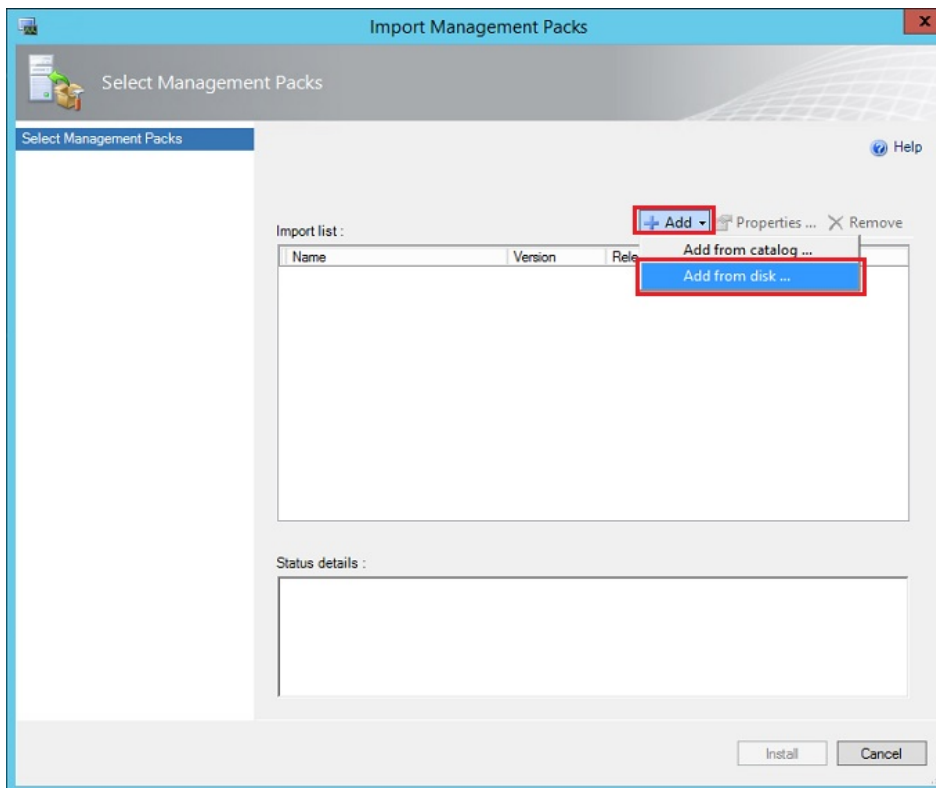
Installation

1. Access the SCOM Operations console and connect to your Management Server.
2. Click on the **Administration** navigation button in the left hand pane of the console.
3. Right-click on **Management Packs** and select **Import Management Packs...**



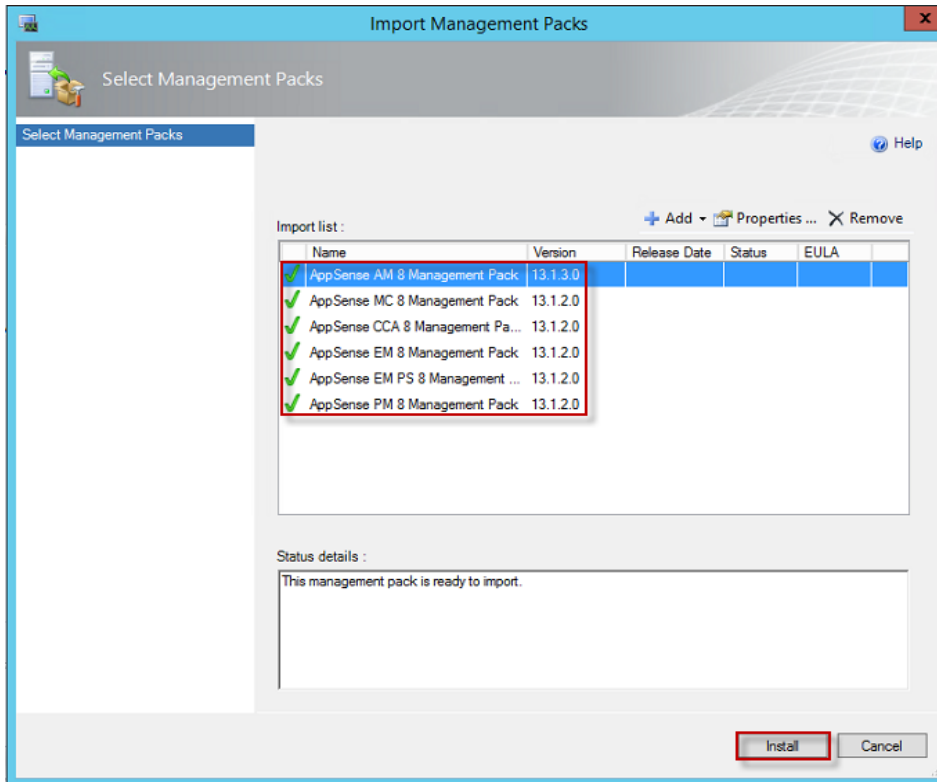
The Import Management Packs wizard opens to display the Select Management Packs page.

4. Click **Add** and select **Add from disk...**

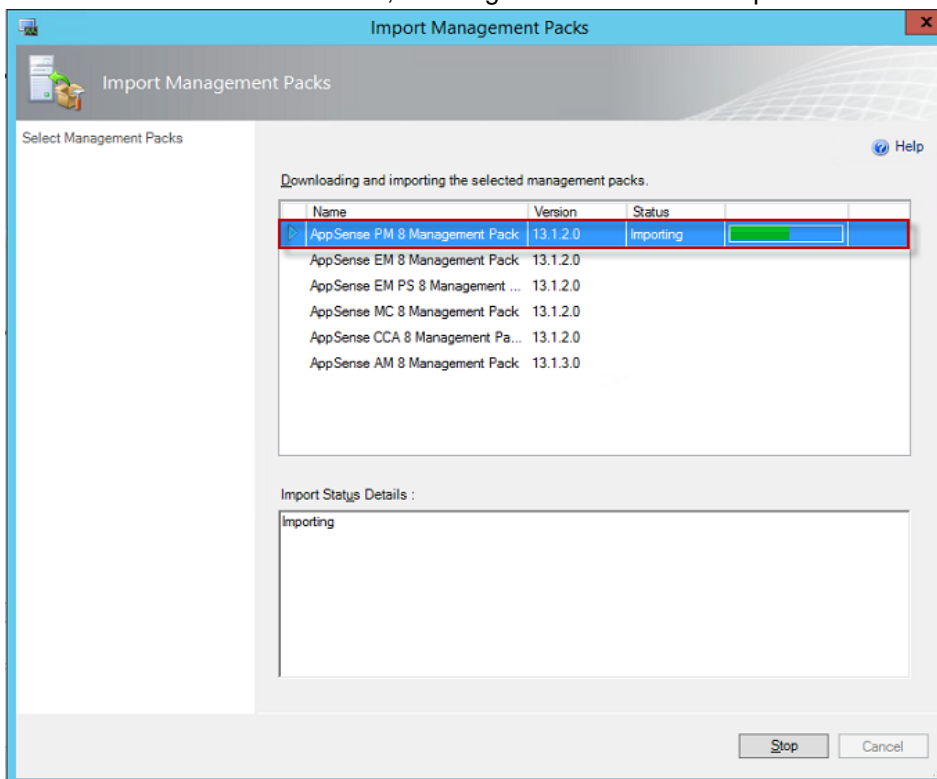


5. A dialog prompts you to search the online catalog for management pack dependencies. As the AppSense Management Packs have no dependencies click **No**.
6. From the Select Management Packs to Import dialog browse to the location of the AppSense management packs to be installed.

7. Select the required management packs relevant to your environment and click **Open**.
8. The selected management packs are shown in the import list. Click **Install**.



The wizard starts the installation, showing the status of each import.



9. Once the import is complete, click **Close** to complete the installation.
10. Auditing needs to be enabled in each of the Product Consoles so that events are written to the Windows Application Event Log and therefore picked up by the AppSense Management Pack for System Center Operations Manager.